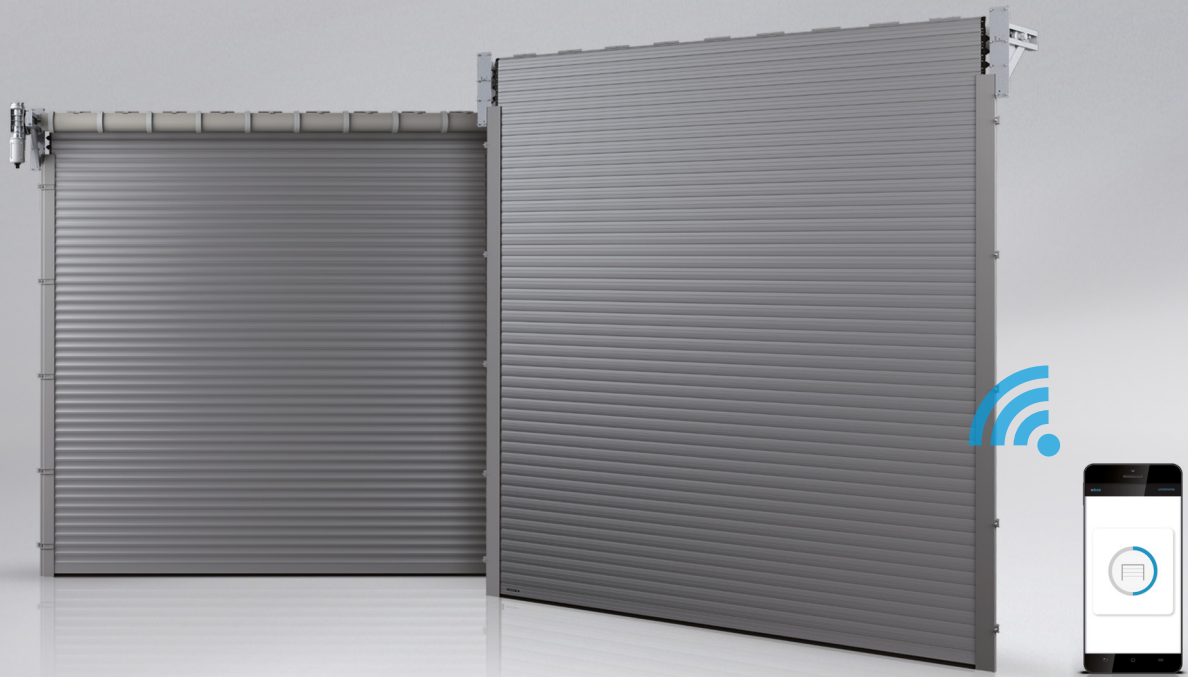


# INDUSTRIAL DOORS



**WISNIOWSKI**

GATES | WINDOWS | DOORS | FENCES

## ROLLER DOORS BR-100

**Intended use:** Industrial roller doors are designed for warehouses, industrial facilities, and workshops. They are made of aluminium profiles infilled with freon-free polyurethane foam and an integrated 3x400V drive unit installed on the moving shaft. The door is sealed around the entire circumference.



### SAVES SPACE

A perfect solution for buildings where no space can be wasted or where ceiling tracks cannot be installed. Once the door curtain is wound on the shaft, it takes up very little space just behind the lintel. This provides free area under the ceiling and on the sides.



### ANTI-CORROSIVENESS

The door curtain and tracks are made of aluminium, whose excellent technical parameters and resistance to weather outmatch other materials.



### RELIABLE

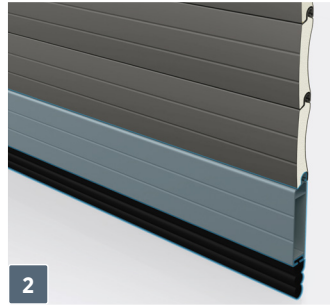
The moving shaft (standard accessory), which travels on moving brackets, is our solution that lets you use the door for longer without any trouble at all and at the same time, makes the door reliable, safe, and quiet. As the moving shaft winds the curtain, it changes its position in relation to the lintel wall to keep the tracks of the moving curtain aligned.



## STRUCTURE



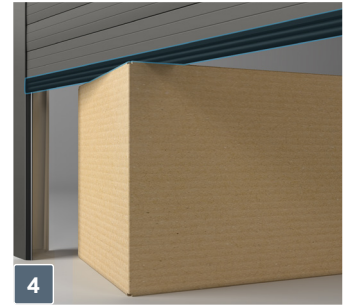
**1**  
**Door curtain** – made of aluminium profiles 100 [mm] high and 25 [mm] thick infilled with freon-free polyurethane foam.



**2**  
**Bottom profile** – aluminium reinforcing profile 115 [mm] high, painted in the door curtain colour as standard.



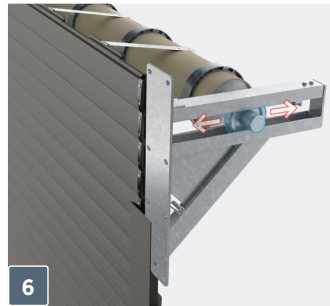
**3**  
**Distance brackets** – ensure distance between the profiles when the door curtain is wound to allow quiet operation of the door and to extend the life of the door.



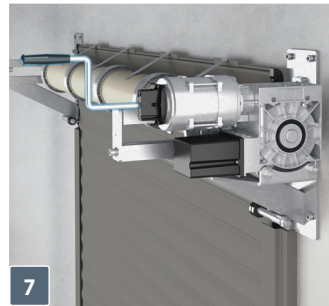
**4**  
**Safety edge** – is mounted in the bottom gasket to stop the door when it contacts an obstacle and returns it to its open position.



**5**  
**Aluminium tracks** – are installed inside the room along the lateral edges of the opening, they are fitted with brush gaskets and slides.



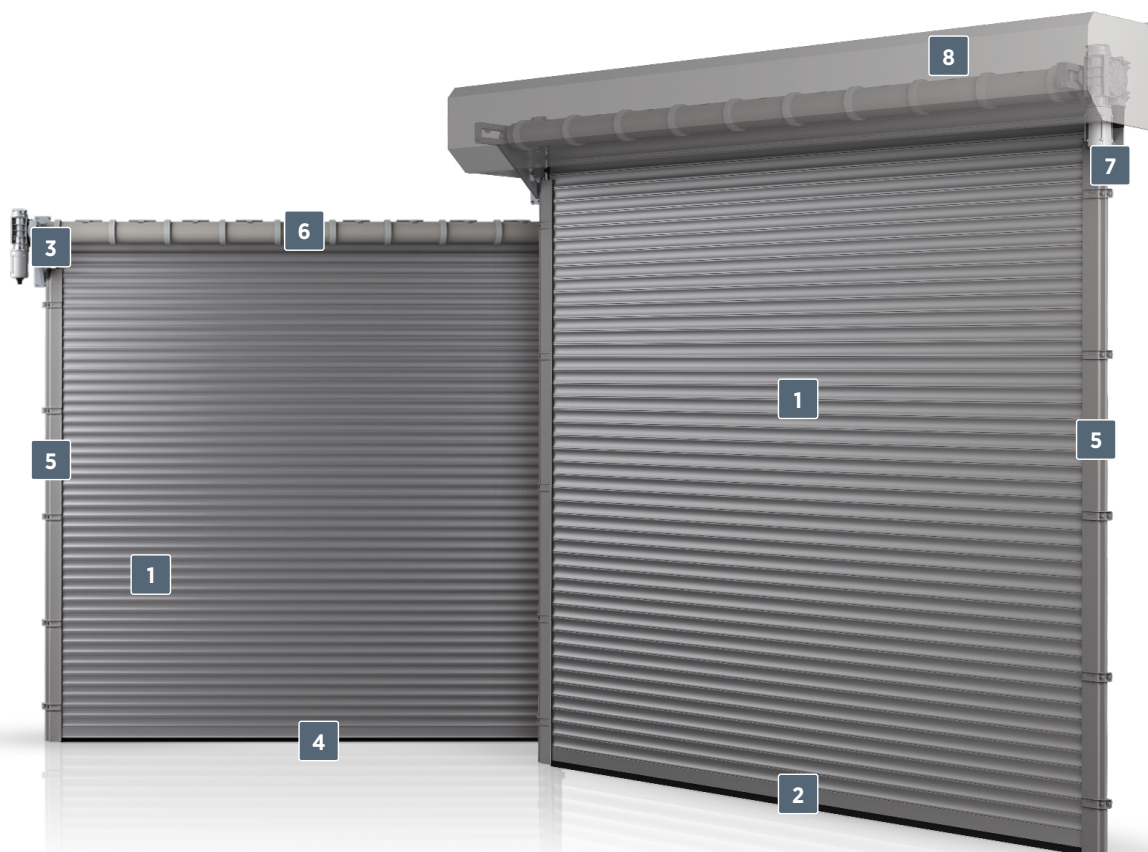
**6**  
**Moving shaft** – as the moving shaft winds the curtain, it changes its position in relation to the lintel wall to keep the tracks of the moving curtain aligned.



**7**  
**Emergency door opening** – lets you open the door manually in case of a power outage using the crank or the chain hoist provided on the actuator for emergency opening.

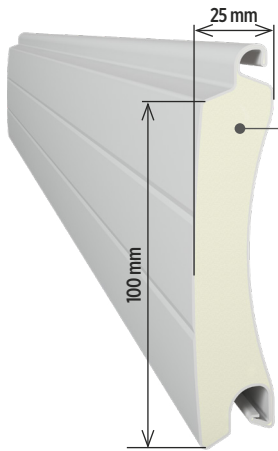


**8**  
**Box** – for outdoor installation.



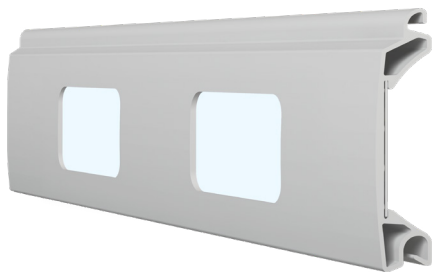


## PROFILE STRUCTURE

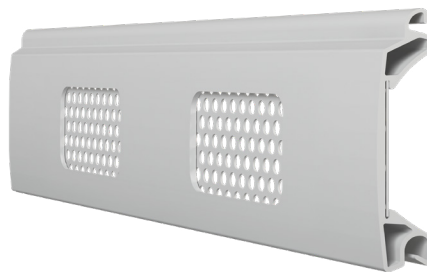


**Robust and reliable design.**

Our whole range of industrial doors follows identical design principles. Our very own production line for manufacturing profiles ensures full quality control. Special design solutions, such as distance brackets installed at the ends of the profiles, which prevent door profiles from separating and prevent scratching, ensure a long life.



**Glazed aluminium profile (single-wall).**



**Ventilated aluminium profile (single-wall).**



**Bottom aluminium reinforcing profile 115 [mm] high.**

## COLOURS | STANDARD COLOURS

Red RAL 3000	Blue RAL 5010	Light Blue RAL 5012	Grey RAL 7012	Graphite RAL 7016	Brown RAL 8014
Brown RAL 8019	Light Silver RAL 9006	Dark Silver RAL 9007	White RAL 9010		



We offer a wide range of colours in response to the needs and ideas of our customers who expect a durable, appealing, and original look. You can match the door colour to the elevation, windows, and finishing elements of your building.

For customers looking for doors in unique colours, we offer powder coating in over 200 RAL palette colours.



## WIND LOCKS

Wind locks improve the strength of the door. Wind locks are an extension of profile distance brackets. When the door moves, wind locks travel in specially designed tracks, which are further reinforced with stabilizing holders. Wind locks are a standard accessory in door widths  $S_o > 5,000$  [mm]. Doors narrower than  $S_o \leq 5,000$  [mm] can be fitted with wind locks as an option. **Doors fitted with wind locks comply with class 3 wind load resistance.**



### Wind locks.

Used in doors with  $S_o > 5,000$  [mm] as a standard accessory. Installed in each door profile. Wind locks are also available with door widths  $S_o \leq 5,000$  [mm] as an optional accessory. Doors with wind locks feature class 3 wind load resistance.



### Mounting brackets reinforcing door tracks.

Installed together with wind locks. They further brace and stabilize the tracks.



### Aluminium reinforced tracks.

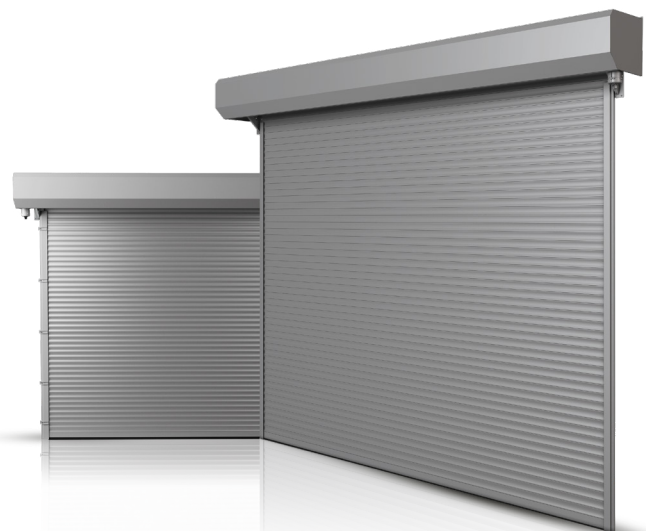
For operation with wind locks. Installed along the lateral edges of the opening, they are fitted with brush gaskets and slides. Painted in the door curtain colour as standard.

## EXTERNAL INSTALLATION

### Outdoor installation.

The outdoor fitting option is practical whenever installation conditions prevent the door from being installed inside the room (e.g. when the lintel is too low or the side clearance is insufficient). The precondition for installing the drive unit outdoors is protection of the system from adverse weather conditions with a box. The box protects the drive unit of the door and its electrical drive from dust, snow, and rain.

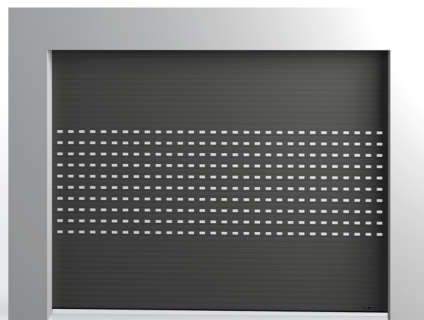
The box can also be used inside the room if the installation conditions permit.



## DOOR DESIGNS



BR-100 door.



BR-100 door (example glazing option).



BR-100 door with a ventilated profile.



## ASSEMBLY DIMENSIONS

BR-100 - standard finish	
Sj	So
Hj	Ho - 200 [mm] <sup>(3)</sup>
Nmin	540 [mm] at Ho ≤ 3,000 [mm] 560 [mm] at 3,000 < Ho ≤ 4,000 [mm] 580 [mm] at 4,000 < Ho ≤ 5,000 [mm] 600 [mm] at 5,000 < Ho ≤ 6,000 [mm] 660 [mm] at 6,000 < Ho ≤ 7,200 [mm]
W1: min	250 [mm]      280 [mm] <sup>(2)</sup>
W2: min <sup>(1)</sup>	600 [mm]      630 [mm] <sup>(2)</sup>
Emin	Nmin + 300 [mm]

Tab. 1. Installation parameters - standard finish.

BR-100 - internal shaft guard included	
Sj	So
Hj	Ho - 200 [mm] <sup>(3)</sup>
Nmin	690 [mm] at Ho ≤ 3,000 [mm] 710 [mm] at 3,000 < Ho ≤ 4,000 [mm] 730 [mm] at 4,000 < Ho ≤ 5,000 [mm] 750 [mm] at 5,000 < Ho ≤ 6,000 [mm]
W1: min	250 [mm]      280 [mm] <sup>(2)</sup>
W2: min <sup>(1)</sup>	600 [mm]      630 [mm] <sup>(2)</sup>
Emin	Nmin + 300 [mm]

Tab. 2. Installation parameters - internal shaft guard included.

BR-100 - outdoor (case) installation version	
Sj	So
Hj	Ho - 200 [mm]
Nmin	675 [mm]
W1: min	330 [mm]      360 [mm] <sup>(2)</sup>
W2: min <sup>(1)</sup>	600 [mm]      630 [mm] <sup>(2)</sup>
Emin	Nmin + 300 [mm]

Tab. 3. Installation parameters - outdoor (case) installation version.

- <sup>(1)</sup> - The minimum side distance taking into account the margin for collision-free mounting and dismantling of the drive.
- <sup>(2)</sup> - Door fitted with wind hooks.
- <sup>(3)</sup> - The full clear passage of the doors with the Automatik and Automatik S drive units is unavailable with the optional outdoor (case) installation version.



**Clear passage height Hj = door opening height Ho - 200 [mm]. The full passage width cannot be obtained when the "box - external installation" option is selected in the Automatik and Automatik S door series.**

## AVAILABLE DIMENSIONS

Opening height <sup>(4)</sup> (Ho) in [mm] up to	Opening width <sup>(4)</sup> (So) in [mm] up to																											
	1,500	1,750	2,000	2,250	2,500	2,750	3,000	3,250	3,500	3,750	4,000	4,250	4,500	4,750	5,000	5,250	5,500	5,750	6,000	6,250	6,500	6,750	7,000	7,250	7,500	7,750	8,000	
2,000																												
2,250																												
2,500																												
2,750																												
3,000																												
3,250																												
3,500																												
3,750	--	--																										
4,000	--	--																										
4,250	--	--																										
4,500	--	--																										
4,750	--	--																										
5,000	--	--																										
5,250	--	--																										
5,500	--	--																										
5,750	--	--																										
6,000	--	--																										
6,250	--	--	--	--	--	--																						
6,500	--	--	--	--	--	--																						
6,750	--	--	--	--	--	--																						
7,000	--	--	--	--	--	--																						
7,200	--	--	--	--	--	--																						

<sup>(4)</sup> In gate widths So > 5,000 [mm] wind hooks are standard accessories.

- A** The emergency door opening crank is included in standard accessories.
- B** The chain hoist (crank replacement) of the emergency door opening gear is included in standard accessories.



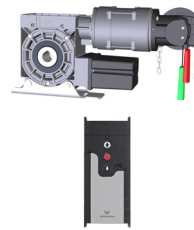
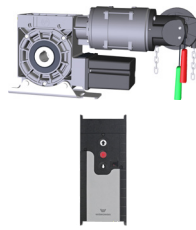
The BR-100 doors are not intended for indoor car parks and other buildings where heavy duty operation is expected.

<sup>(4)</sup> - Ordering size.



## AUTOMATIC OPERATING UNIT KITS

Automatic operating units fitted in WISNIEWSKI industrial gates are configured for continuous reliable operation. We use proven GfA drive and control units that ensure the highest comfort of use and many years of operation.



Technical data	Totmann	Automatik		Automatik S
Control system	TS-959	TS-970	TS-971	TS-981
Mains	3x400 [V]; 50-60 [Hz]	3x400 [V]; 50-60 [Hz]	3x400 [V]; 50-60 [Hz]	3x400 [V]; 50-60 [Hz]
Motor supply	3x400 [V]; 50 [Hz]	3x400 [V]; 50 [Hz]	3x400 [V]; 50 [Hz]	3x400 [V]; 50 [Hz]
Limit switch	Electronic, available from operator level	Electronic, available from operator level	Electronic, available from operator level	Electronic, available from operator level
Display	yes	yes	yes	yes
Emergency opening	yes	yes	yes	yes
Rotational speed	15 [RPM]; fixed	15 [RPM]; fixed	15 [RPM]; fixed	15 [RPM]; fixed
Motor power	0,4 / 1,1 [kW] <sup>(1)</sup>	0,4 / 1,1 [kW] <sup>(1)</sup>	0,4 / 1,1 [kW] <sup>(1)</sup>	0,4 / 1,1 [kW] <sup>(1)</sup>
Rated current	2,2 - 4,7 [A] <sup>(1)</sup>	2,2 - 4,7 [A] <sup>(1)</sup>	2,2 - 4,7 [A] <sup>(1)</sup>	2,2 - 4,7 [A] <sup>(1)</sup>

Funkcje	Totmann	Automatik		Automatik S
Quick programming	yes	yes	yes	yes
Obstacle detection	no	yes; safety edge	yes; safety edge	yes; safety edge
Automatic closing	no	yes; from 1 ÷ 240 [s]	yes; from 1 ÷ 240 [s]	yes; from 1 ÷ 240 [s]
Release in end position	no	no	no	no
RWA - heat and smoke extraction	no	no	no	yes
Traffic control	no	no	no	yes
Exterior lighting control	yes	yes	yes	yes
Partial opening of the door	no	yes	yes	yes
Cycle counter	yes	yes	yes	yes
Recent fault logging	yes	yes	yes	yes

Możliwość rozbudowy	Totmann	Automatik		Automatik S
Signal light	no	yes	yes	yes
LED signal lights (red - green)	no	yes	yes	yes
Compatible with photocells	no	yes	yes	yes
Drive unit in the IP65 version	no	yes	yes	yes
WSD module - wireless signal transmission from the optical strip	no	no	yes	no
Safety barrier	no	yes	yes	yes
Exterior lighting control	no	yes	yes	yes
Motion sensor	no	yes	yes	yes
Induction loop detector	no	yes	yes	yes
Safety photocells	no	yes	yes	yes
Acoustic signal	no	yes	yes	yes

<sup>(1)</sup> - depends on the drive type.



### CONTROL YOUR DOOR WITH YOUR SMARTPHONE!

The Ri-Co controller means safety and control. Use your smartphone to control WISNIEWSKI doors from any place in the world. Just activate the wBox app available in Google Play and App Store to control your power operated door.



### Ri-Co CONTROLLERS

With 2 Ri-Co versions you can choose the level of control you need. The basic Ri-Co controller can only open or close the door. But Ri-Co Pro is an extended version, which also lets you check the status of the door (door open/closed). Ri-Co requires a Wi-Fi network. Take full control without having to use any auxiliary devices.



## OPTIONAL ACCESSORIES



### Code keypad.

Operates the door after an individual access code is provided. Can be installed indoors or outdoors.



### Proximity card reader.

Can be controlled with proximity cards or fobs. Just place the card/fob against the reader to operate the door drive.



### Warning lamp.

Warning function. Orange blinking light indicates that the door is operating.



### LED signal lights.

Facilitates traffic management around the door. Set includes two lights: green and red indicating that the door is open or closed.



### External key switch.

The switch requires a key for the door to operate. Recommended where access must always be controlled.



### Microwave motion sensor.

The sensor automatically opens the door when a vehicle or a person is in front of the entrance.



### Acoustic signal.

Warning function. Acoustic signals indicate when the door operates.



### Transmitter.

Works with the radio receiver and controls the drive unit through radio waves. One remote control can operate four individual doors.



### Photocells.

If an obstacle appears in the clear passage, the infrared beam is interrupted, the door stops and returns to the open position.



### Pull switch.

Sequential door control without using a transmitter.



### Ri-Co Pro (advanced version).

2 outputs and 2 inputs, which allows the controller to control two circuits and receive feedback about their status (open / closed / intermediate).



### Special door control.

XL special door control (IP 65 version).



## GALLERY



BR-100 roller doors.



BR-100 roller doors.





BR-100 roller doors.



BR-100 roller doors (as seen from the inside).



BR-100 roller doors (as seen from the inside).



BR-100 roller doors.





## TECHNICAL DATA

	BR-100
Curtain	Aluminium sheet profiles, polyester coating on both sides, infilled with high density PU foam $g=42 \text{ kg/m}^3$ without HCFC
Panel height/thickness	100 [mm] / 25 [mm]
Minimum number of cycles	20,000
Heat transfer coefficient	$U = 3.7 \text{ [W/m}^2\text{xK]}$ for 8,000 x 6,000 [mm] door in accordance with PN-EN 13241-1 section 4.4.5
Watertightness	class 2 in accordance with PN-EN 13241-1 section 4.4.2
Resistance to wind load	class 2 – door without wind locks class 3 – door with wind locks in accordance with PN-EN 13241-1 section 4.4.3
Air permeability	class 2 in accordance with PN-EN 13241-1 section 4.4.6
Sound reduction index	$R_w = 20 \text{ [dB]}$ in accordance with PN-EN ISO 717-1: 1999
Drive type/supply type	GfA series SI / 3x400 V
Brackets	Moving (running), galvanized steel (painted version available).
Sealing	The door is sealed along the entire circumference (tracks are fitted with a double brush seal, bottom profile is fitted with a cellular EPDM gasket, brush seal in the lintel).
Safeguards	Special profile shape preventing crushing of fingers, safety edge (for doors with the Automatik electric drive), electromagnetic brake (for doors with a surface area over $32\text{m}^2$ ), wind locks (for door widths over 5,000 [mm]), emergency opening (crank or chain hoist) Options: photocells, wind locks for door widths under 5,000 [mm].
Optional accessories	External installation (box), shaft cover, ventilated panel, glazed panel, photocells, code lock, motion sensor, signal light (yellow), LED signal light (red – green), transmitter, acoustic signal, magnetic card reader, pull switch, safety edge wireless transmission system, IP 65 drive unit, smartphone control, emergency opening crank security protection, sliding bolt, lock, sealing threshold.
Maximum width / height of the door [mm]	8,000 / 7,200 [mm]
Standard colours	RAL 3000, RAL 5010, RAL 5012, RAL 7012, RAL 7016, RAL 8014, RAL 8019, RAL 9006, RAL 9007, RAL 9010
Custom colours	other RAL


**WISNIOWSKI**

WIŚNIOWSKI Sp. z o.o. S.K.A.  
 PL 33-311 Wielogłowy 153  
 Tel. +48 18 44 77 111  
 Fax +48 18 44 77 110  
[www.wisniowski.eu](http://www.wisniowski.eu)

Let us inspire you!  
 See other solutions from WISNIOWSKI!



The products shown in the pictures often feature special accessories and do not always correspond to their standard versions • The technical data sheet does not constitute an offer within the meaning of the Polish Civil Code • The manufacturer reserves the right to introduce changes without notice • NOTE: The colours shown in the technical data sheet are for reference only • All rights reserved • Copying and use, in part or in full, is prohibited without the consent of WISNIOWSKI Sp. z o.o. S.K.A. • BR-100/0721/EN.