

INDUSTRIAL DOORS



WIŚNIEWSKI

GATES | WINDOWS | DOORS | FENCES

PRESTO 50 DOUBLE-LEAF DOORS

Intended use: The Presto 50 double-leaf door is intended for use in uninsulated buildings, utility buildings, industrial buildings, as well as technical buildings, including food industry buildings (without direct contact with food). The door has proven itself in areas with non-standard installation conditions. The door structure is made up of single-chamber steel sections without a thermal break and utilises the Forster Presto system. The leaf is infilled with 40 [mm] steel sheet panels. Thanks to the corrosion protection of the door, it can be used in line with its intended use in atmospheric corrosion class environments C1, C2, C3 in accordance with PN-EN ISO 12944-2 and PN-EN ISO 14713.



SAFETY

Safety systems focus on minimizing all traces of risk. Regardless of the method of operation, WIŚNIEWSKI doors ensure comfort and safety. Our products are fully compliant with the PN-EN 13241-1 standard.



EASY FITTING

Simple and easy fitting of the double-leaf door both in the opening and in front of the opening is cost- and time-effective.



FUNCTIONALITY

It is a traditional solution in terms of its functionality, but with a very appealing look, which makes it particularly recommended for places where installation conditions prevent the fitting of a sectional or roller door.



STRUCTURE

The door is manually-operated, outswing. As standard, it is fitted with an opening frame installed in the opening, and two symmetrical leaves. The leaves are infilled with a 40 [mm] sectional panel infilled with polyurethane foam.

The door structure is made up of single-chamber steel sections without a thermal break and utilises the Forster Presto system. Both the opening frame and the door leaf are made of sections 1.5 [mm] thick. The sections are joined by welding. The welded structure provides rigidity, resists deflections, and provides reliable use.

The welded joints are ground and polished, then the opening frame and the leaf frames are powder-coated, which ensures an appealing look.

As standard, the opening frame comes with a 20 x 40 [mm] threshold. The threshold constitutes a part of the opening frame.

The door with a height of $H_o \geq 3000$ [mm] or fitted with a wicket door also features a horizontal reinforcing crossbar at the height of 2087 [mm].



1 Opening frame – single-chamber steel sections without a thermal break based on the Forster Presto system. Both the opening frame and the door leaf are made of sections 1.5 [mm] thick. The sections are joined by welding.

2 Bolting – as standard, the active leaf features 1-point bolting – flush-mounted lock for $S_o \leq 2500$ [mm] and $H_o \leq 2500$ [mm]. Additionally, in doors with $S_o > 2500$ [mm] or $H_o > 2500$ [mm], as well as on customer's request, an additional top deadbolt is fitted. The passive leaf features 2-point bolting (top + bottom) actuated with a rotating lever.

3 Hinges – the door is fitted with welded steel hinges with bearings (non-adjustable). The welded hinge connection with the opening frame ensures stable fixation, and eliminates leaf dropping and the need to adjust them.

4 Sealing – the door is sealed along its circumference with hopper gaskets. The gasket is installed on the inside of the leaf, which ensures the required tightness and dampening of the noise when the door is being shut. There are panel joint seals between the panels.

5 Accessories and delivery – the opening frame, in all dimensions, is screwed and delivered in two parts + threshold. The opening frame features holes for direct fitting with anchors.

6 Colours – all steel parts are powder-coated. Steel surfaces are processed by abrasive blasting before powder coating. Powder coating is applied in two layers: a priming base coat and a decorative topcoat. The leaf frame, the opening frame, and the shutter infills are painted on both sides in the same colour. The infill of the door with a sectional panel is white from the inside, similar to RAL 9002 (with the exception of panel joints).

7 Leaf infill – panels made of 40 [mm] steel sheet galvanized and coated with polyester paint on both sides, infilled with high density PU foam $g = 42 \text{ kg/m}^3$ without HCFC.

8 Protective film – a protective film is applied to the leaf for transport (protection from dust and dirt).

9 Panel structure:

Woodgrain – structure imitating the natural grain of wood.

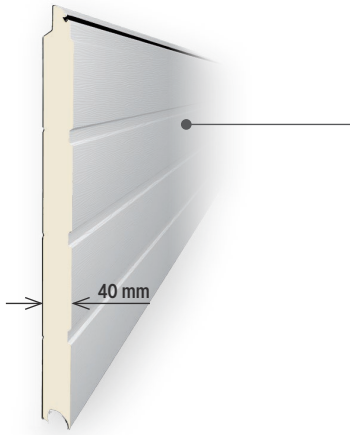
Smoothgrain – smooth structure with micro embossing.

Sandgrain – fine sand structure.

Silkline – smooth structure.



PANEL STRUCTURE



Robust and reliable design.

We consistently use the same design principles in the Presto 50. Thanks to our robust and reliable design, you can rest assured that the door will meet even the most extreme requirements and withstand the most demanding operating conditions. The leaf is infilled with a 40 [mm] steel panel thermally insulated with polyurethane foam. From the outside and inside, the panel structure corresponds to the MakroPro 2.0 sectional doors. The panel colour from the inside is similar to RAL 9002 (except for panel joints). The top section is fitted with a lip gasket.

RIB DESIGNS

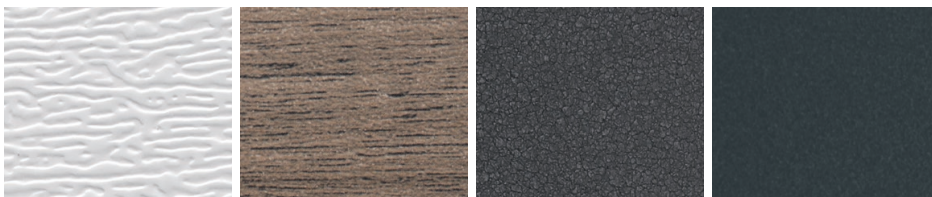


G - without ribs



W - high ribs

STRUCTURES



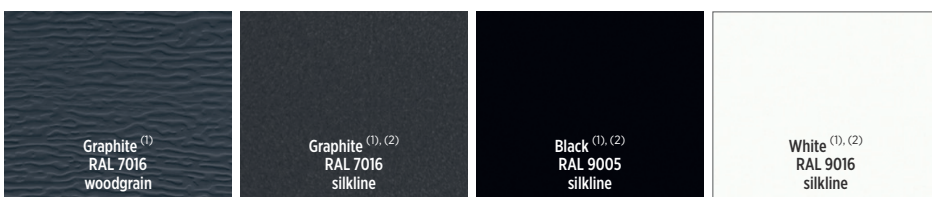
Woodgrain

Smoothgrain

Sandgrain

Silkline

COLOURS | STANDARD COLOURS



Graphite⁽¹⁾
RAL 7016
woodgrain

Graphite^{(1),(2)}
RAL 7016
silkline

Black^{(1),(2)}
RAL 9005
silkline

White^{(1),(2)}
RAL 9016
silkline

⁽¹⁾ - colour of a panel without ribs (G), ⁽²⁾ - colour of a panel with high ribs (W).



COLOURS | SPECIAL COLOURS

 Anthracite Sandgrain	 Anthracite Grey 701605-167 smoothgrain	 Anthracite Quartz 436-1014 smoothgrain	 Anthrazitgrau F436-6003 smoothgrain	 Dark grey silk 4367003 smoothgrain	 Cremeweiss F456-6001 smoothgrain
 Fenstergrau F436-6066 smoothgrain	 Umbragrü F436-60657 smoothgrain	 Black Ulti-Mat PX47097 smoothgrain	 Earl platin 119500 smoothgrain	 Brush schwarzbraun F436-1023 smoothgrain	 White 915205-168 smoothgrain
 Chocolate Brown 887505-1167 smoothgrain	 Cream White 137905-167 smoothgrain	 Dark Green 612505-167 smoothgrain	 Metbrush Silver F436-1002 smoothgrain	 Silbergrau 116700 smoothgrain	 AnTEAK 3241002-195 smoothgrain
 Black Cherry 3202001-167 smoothgrain	 Dark Oak 2052089-167 smoothgrain	 Douglas Fir 3152009-1167 smoothgrain	 Swamp Oak 3167004-167 smoothgrain	 Natural Oak 3118076-1168 smoothgrain	 Rustic Oak 3149008-167 smoothgrain
 Summer Cherry 3214009-195 smoothgrain	 Macore 3162002-167 smoothgrain	 Oregon 1192001-167 smoothgrain	 Sapeli 2065021-167 smoothgrain	 Siena Noce 49237 PN smoothgrain	 Siena PL 49254-015 smoothgrain
 Siena Rosso 49233 PR smoothgrain	 Sheffield Oak Grey F 436-3086 smoothgrain	 Sheffield Oak Brown F 436-3087 smoothgrain	 Sheffield Oak Light F 456-3081 smoothgrain	 Winchester 49240 XA smoothgrain	 Woodec Turner Oak Malt F4703001 smoothgrain
 Woodec Sheffield Oak Alpine F4703002 smoothgrain	 Woodec Sheffield Oak Concrete F4703003 smoothgrain	 Woodec turner oak toffee F470-3004 smoothgrain	 Anthracite Quartz Mat F470-1014 smoothgrain	 Irish Oak 3211305-1148 smoothgrain	 Walnut 2178007-167 smoothgrain
 Golden Oak 2178001-167 smoothgrain	 Walnut smoothgrain	 Golden Oak smoothgrain	 Modern Black silkline	 Modern White silkline	



The Presto 50 door is available in a wide range of colours. You can match the door to the individual character of the building and your needs so that the door not only closes off the building, but constitutes its integral part that perfectly matches the company colours, façade or the surrounding environment.



AVAILABLE DIMENSIONS



The available dimensions of double-leaf Presto 50 doors

Opening height (Ho) in [mm] up to	Opening width (So) in [mm] up to																					
	2000	2100	2200	2300	2400	2500	2600	2700	2800	2900	3000	3100	3200	3300	3400	3500	3600	3700	3800	3900	4000	
2000																						
2100																						
2200																						
2300																						
2400																						
2500																						
2600																						
2700																						
2800																						
2900																						
3000																						
3100																						
3200																						
3300																						
3400																						
3500																						
3600																						
3700																						
3800																						
3900																						
4000																						



CROSS-SECTIONS

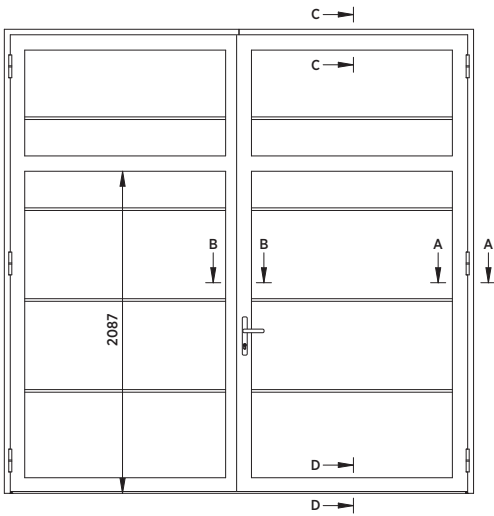


Fig. 1. Presto 50 double-leaf door

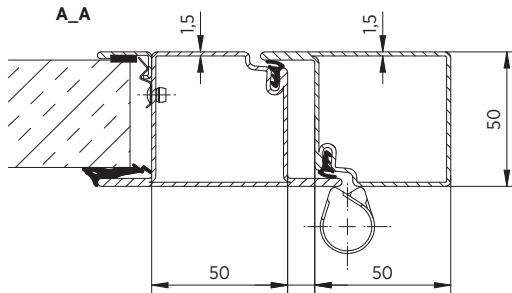


Fig. 2. Horizontal cross-section of a Presto 50 door

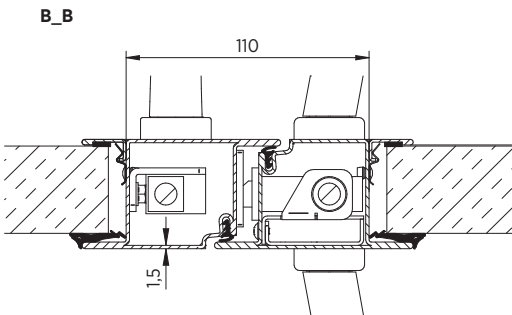


Fig. 3. Horizontal cross-section of a Presto 50 door

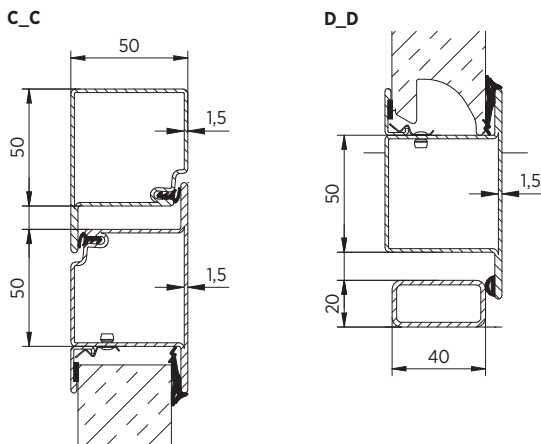


Fig. 4. Vertical cross-section of a Presto 50 door

HINGES

The door is fitted with welded steel hinges with bearings (non-adjustable). The welded hinge connection with the opening frame ensures stable fixation, and eliminates leaf dropping and the need to adjust them. The number of hinges in the door is specified in Tab. 1.

Opening height up to	Opening width up to			
	2500	3000	3500	4000
2000	4			
2500		6		
3000				
3500			8	
4000				

Tab. 1. The number of hinges in the Presto 50 door



Fig. 5. Hinges welded to the opening frame structure and the leaf



INSTALLATION TYPES

Installation of the opening frame in the opening, Fig. 6 and Fig. 7, as well as in front of the opening, Fig. 8 and Fig. 9.
The door is fitted with door installation holders and an installation kit (anchors).

Installation requirements – Presto 50

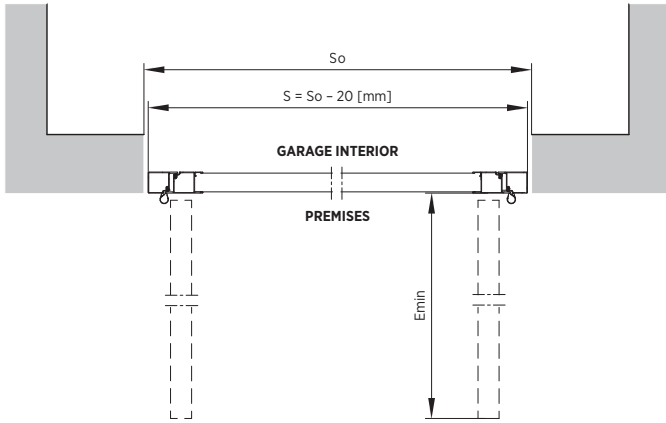


Fig. 6. Installation in the opening – horizontal cross-section – Presto 50 double-leaf door.

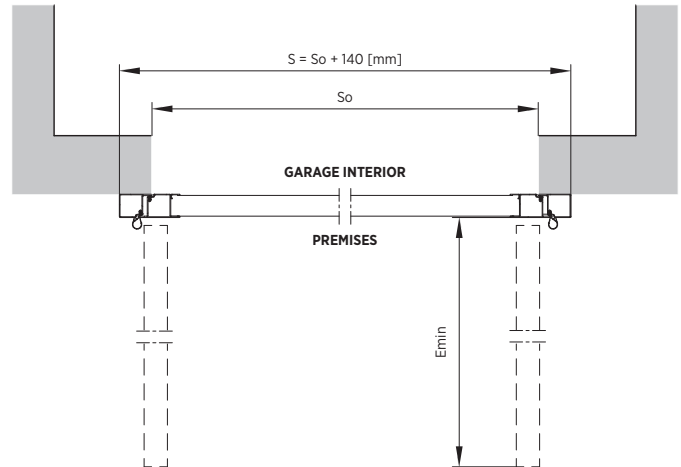


Fig. 8. Installation in front of the opening – horizontal cross-section – Presto 50 double-leaf door.

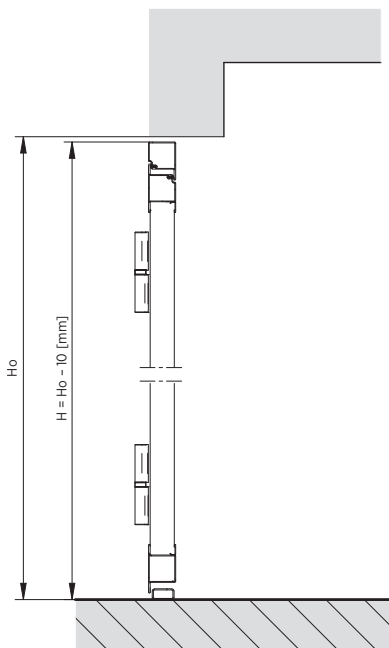


Fig. 7. Installation in the opening – vertical cross-section – Presto 50 double-leaf door.

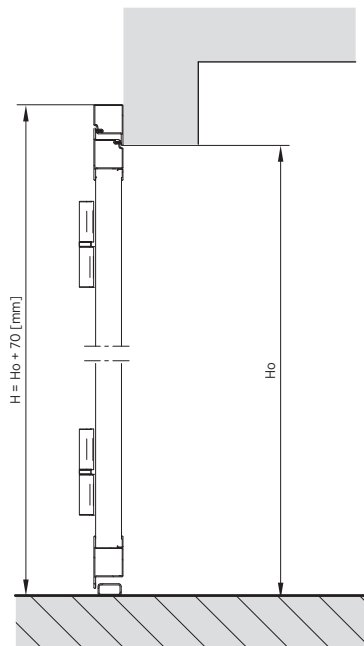


Fig. 9. Installation in front of the opening – vertical cross-section – Presto 50 double-leaf door.

- S – door width (ordering dimension),
- So – opening width,
- H – door height (ordering dimension),
- Ho – opening height,
- Emin – required clearance on the hinge side to enable the leaf to open,

- Sj – clear opening width after opening (95 degrees),
- Sj = S - 210 [mm]**
- Hj – clear opening height,
- Hj = H - 100 [mm]**

- S – door width (ordering dimension),
- So – opening width,
- H – door height (ordering dimension),
- Ho – opening height
- Emin – required clearance on the hinge side to enable the leaf to open

- Sj – clear opening width after opening (95 degrees)
- Sj = S - 210 [mm]**
- Hj – clear opening height,
- Hj = H - 100 [mm]**



OPTIONAL ACCESSORIES

WICKET DOOR | STANDARD VERSION

- As standard, the door is fitted with a wicket door restrictor, which makes it possible to open the door at a 95° angle.
- As standard, the door is fitted with a lock with a lock cylinder and three keys.
- The actual clear opening in the wicket door is 940 x 2035 [mm], see Fig. 11.
- Total height of the wicket threshold 52 [mm],
- The wicket door is outswing only,
- The wicket door can be installed in doors with $S \geq 3000$ [mm] and $H_o \geq 2800$ [mm],
- The wicket door is installed in the active leaf.
- The door with a wicket door is fitted with a reinforcing crossbar over the wicket door at a height of 2087 [mm].



Fig. 10. Presto 50 double-leaf door with a wicket door.

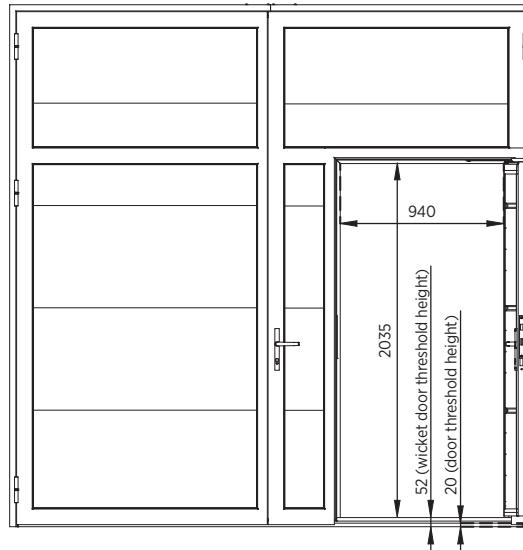


Fig. 11. The standard opening passage in the wicket door in the Presto 50 double-leaf door

VENTILATION GRILLES



K-1 ventilation grille.
 Dimensions 426 x 89 [mm] (clear opening).
 Air flow for grille "K-1": 464 [m³/h] in accordance with PN-EN 12427. Actual ventilation area - 0.02 [m²].



K-2 ventilation grille.
 Dimensions 525 x 195 [mm] (clear opening).
 Air flow for grille "K-2": 746 [m³/h] in accordance with PN-EN 12427. Actual ventilation area - 0.05 [m²].



K-3 ventilation grille.
 Dimensions 308 x 103 [mm] (clear opening).
 Grille with a double mosquito screen and air flow adjustment. Air flow: 159 [m³/h] in the open position in accordance with PN-EN 12427. Actual ventilation area - 0.015 [m²].



PORTHOLES



Type A-1

Made of double, clear acrylic glass with a rough frame surface. The external frame is available in RAL: 7016, 8003, 8011, 8014, 8016, 9005, 9016. The internal frame is only available in white. External dimensions of the frame 600 x 270 [mm]. Light transmission 86%.



Type A-3

Made of double, clear acrylic glass with a smooth frame surface. Black external and internal frame. Internal/external frame made of ABS. External dimensions of the frame 643 x 337 [mm]. Light transmission 86%.



Portholes type A-3 in the Presto 50 double-leaf door – as seen from the outside.

GLAZED PANEL



The Presto 50 door is available with a single aluminium panel glazing. The panel is painted on both sides in the colour of the outer part of the door.

OPENWORK INFILL



The door fully infilled with a ventilation shutter made of a 1 [mm] thick steel sheet. The ventilation surface area is 18% of the shutter surface.



PHOTO GALLERY



Presto 50 double-leaf door



TECHNICAL DATA

	Presto 50
Infill	A panel made of steel sheet galvanized and polyester coated on both sides, infilled with high density PU foam $g = 42 \text{ kg/m}^3$ without HCFC
Opening frame	Single-chamber steel sections without a thermal break based on the Forster Presto system. Both the opening frame and the door leaf are made of sections 1.5 [mm] thick. The sections are joined by welding.
Accessories and delivery	The opening frame, in all dimensions, is screwed and delivered in two parts + threshold. The opening frame features holes for direct fitting with anchors.
Installation types	Installation of the opening frame in the opening and in front of the opening
Thermal transmittance factor	NPD
Watertightness class	class 2 in accordance with PN-EN 13241-1 section 4.4.2
Wind load resistance class	class 2 in accordance with PN-EN 13241-1 section 4.4.3
Air permeability class	class 4 in accordance with PN-EN 13241-1 section 4.4.3
Sound reduction index	NPD
Optional accessories	Openwork infill, wicket door, auxiliary lock, standard lock cylinder with a one-key system, support foot (door stop), rail door closer, additional top bolt in the active leaf (standard with $H_o > 2500$ [mm] or $S_o > 2500$ [mm]), A-1 and A-3 porthole, aluminium panel glazing, K-1, K-2 and K-3 ventilation grille.
Maximum width / height of the door [mm]	4000 / 4000
Available panel rib designs	G - no ribs, W - high ribs
Available panel structures	woodgrain, smoothgrain, sandgrain, silkline
Standard RAL colours	RAL 7016, RAL 9005, RAL 9016
Custom colours	Other RAL colours, RAL mat structure colours, and the Home Inclusive 2.0 collection colours, special colours (film-coated panels)



WIŚNIEWSKI

WIŚNIEWSKI Sp. z o.o. S.K.A.
 PL 33-311 Wielogłowy 153
 tel. +48 18 44 77 111
 Fax +48 18 44 77 110

www.wisniowski.eu

Let us inspire you!
 See other solutions from WIŚNIEWSKI!



The products shown in the pictures often feature special accessories and do not always correspond to their standard versions • The technical data sheet does not constitute an offer within the meaning of the Polish Civil Code • The manufacturer reserves the right to introduce changes without notice • NOTE: The colours shown in the technical data sheet are for reference only • All rights reserved • Copying and use, in part or in full, is prohibited without the consent of WIŚNIEWSKI Sp. z o.o. S.K.A. • Presto 50/10.22/EN.