

RELOADING SYSTEMS



Inkema for
 **WIŚNIEWSKI**

GC01 SYMMETRIC WHEEL GUIDES

Intended use: To safely and accurately dock a lorry in the loading dock. The wheel guides enable the vehicle to park accurately without the risk of damaging the loading dock, the building or the vehicle.



DURABILITY

Hot-dip galvanized wheel guides meet the aesthetic requirements and ensure proper resistance to weather, especially to the abrasion of the outer protective coating by lorry tyres.



SAFETY

Loading and unloading decks are solutions engineered to precisely compensate the height difference between the floors of different vehicles and dock levellers. They make it possible to load and unload a truck with a single horizontal movement.



GOOD PARKING POSITION

The wheel guides are installed in front of the dock levellers and they make it easier for lorries to reverse to the warehouse docks. The wheel guides for lorries protect loading doors, façades and vehicles. The wheel guides are also an effective solution for axial positioning of trailers when docking vehicles, which improves the service life and ensures proper operation of the dock shelter.

TECHNICAL DESCRIPTION

The wheel guide system makes it easier for drivers to safely dock their vehicle, while at the same time protecting the dock shelter, dock leveller and other vehicles from damage.

Symmetric wheel guides (right and left can be used interchangeably) are made of a hot-dip galvanized tube.

Finish

The wheel guides are galvanized as standard.

Available versions:

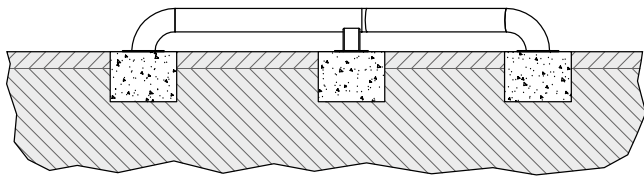
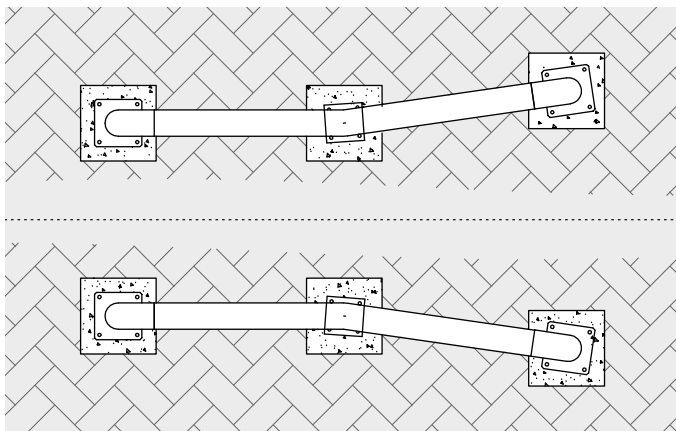
- Screwed to the floor with anchors (anchors included) - 61GC010002.

- For embedding in concrete (additionally furnished with feet for embedding in concrete to which the wheel guide is welded) - 61GC010004.

Technical specification

Length	2,620 [mm]
Height	260 [mm]
Diameter	140 [mm]
Thickness	3 [mm]
Material	Galvanized steel grade SP44
Number of feet	3

Anchored version - 61GC010002



Version for embedding in concrete - 61GC010004

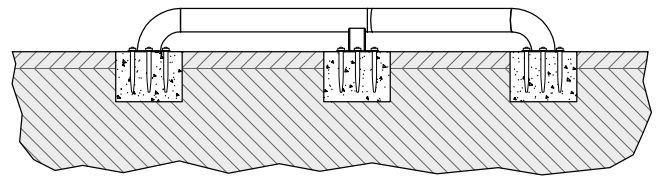
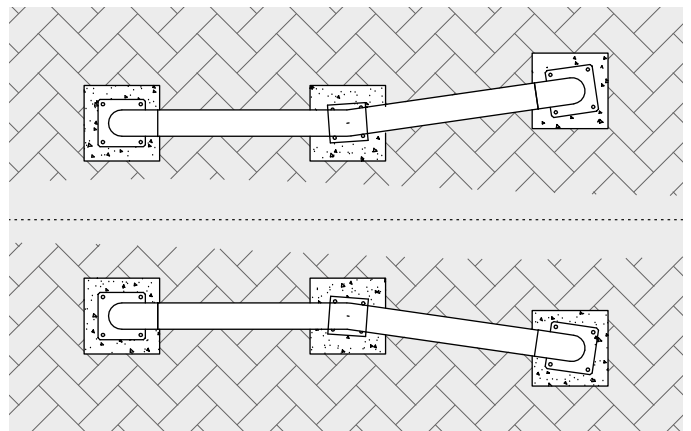


PHOTO GALLERY

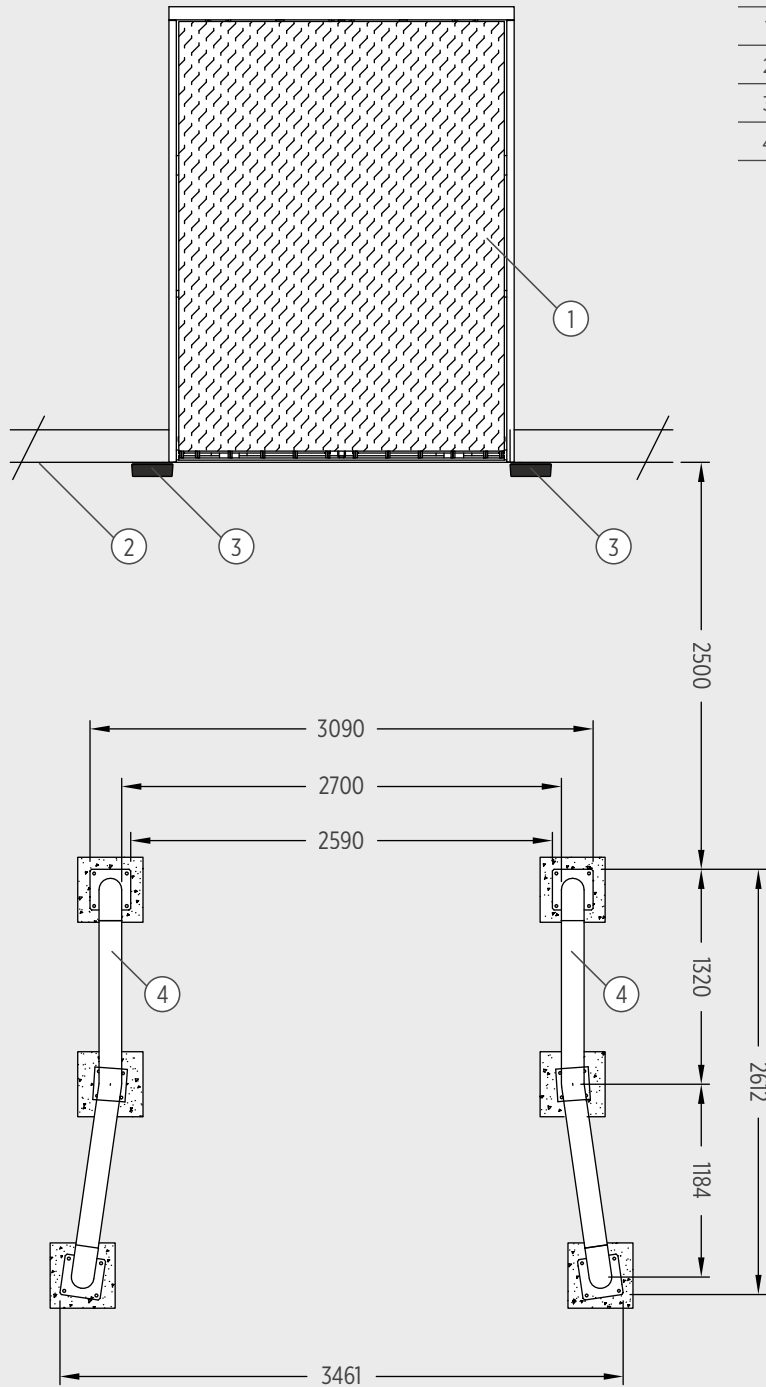


Symmetric wheel guides GC01 - galvanized.



Symmetric wheel guides GC01 - galvanized.

SYMMETRIC WHEEL GUIDE INSTALLATION



- | | |
|---|-------------------------|
| 1 | Dock leveller. |
| 2 | Building façade. |
| 3 | Rubber bumper. |
| 4 | Symmetric wheel guides. |



WISNIEWSKI

WIŚNIEWSKI Sp. z o.o. S.K.A.
 PL 33-311 Wielogłowy 153
 Tel. +48 18 44 77 111
 Fax +48 18 44 77 110
www.wisniowski.eu

Let us inspire you!
 See other solutions from WISNIEWSKI!



The products shown in the pictures often feature special accessories and do not always correspond to their standard versions • The technical data sheet does not constitute an offer within the meaning of the Polish Civil Code • The manufacturer reserves the right to introduce changes without notice • NOTE: The colours shown in the technical data sheet are for reference only • All rights reserved • Copying and use, in part or in full, is prohibited without the consent of WISNIEWSKI Sp. z o.o. S.K.A. • GC01 Wheel Guides/04.21/EN.